

STR # 35409 / Created July 17, 2023

Monthly STAR Report : Baymont Inn & Suites Dublin

For the Month of: June 2023

Currency: US Dollar / Competitive Set Data Excludes Subject Property



Table Of Contents	1
Monthly Performance at a Glance	2
STAR Summary	3
Competitive Set Report	4
Response Report	5
Day of Week & Weekday/Weekend	6
Daily Data for the Month	7
Help	8

Corporate North American Headquarters
T: +1 (615) 824 8664
support@str.com www.str.com

International Headquarters
T: +44 (0) 207 922 1930
hotelinfo@str.com www.str.com

2023 © CoStar Group. This STR Report is a publication of STR, LLC and STR Global, Ltd., CoStar Group companies, and is intended solely for use by paid subscribers. The information in the STR Report is provided on an "as is" and "as available" basis and should not be construed as investment, tax, accounting or legal advice. Reproduction or distribution of this STR Report, in whole or part, without written permission is prohibited and subject to legal action. If you have received this report and are NOT a subscriber to this STR Report, please contact us immediately. Source: 2023 STR, LLC / STR Global, Ltd. trading as "STR".

Tab 2 - Monthly Performance at a Glance - My Property vs. Competitive Set

Baymont Inn & Suites Dublin 100 PM Watson Dr Dublin, GA 31021 Phone: (478) 275-3008
STR # 35409 ChainID: 46913 MgtCo: None Owner: None
For the Month of: June 2023 Date Created: July 17, 2023 Monthly Competitive Set Data Excludes Subject Property

June 2023									
	Occupancy (%)			ADR			RevPAR		
	My Prop	Comp Set	Index (MPI)	My Prop	Comp Set	Index (ARI)	My Prop	Comp Set	Index (RGI)
Current Month	64.1	59.3	108.2	54.06	66.83	80.9	34.67	39.60	87.5
Year To Date	55.1	61.1	90.1	48.57	66.52	73.0	26.74	40.66	65.8
Running 3 Month	63.3	64.4	98.3	52.55	67.56	77.8	33.27	43.50	76.5
Running 12 Month	52.6	58.7	89.6	51.77	66.06	78.4	27.23	38.78	70.2

June 2023 vs. 2022 Percent Change (%)									
	Occupancy			ADR			RevPAR		
	My Prop	Comp Set	Index (MPI)	My Prop	Comp Set	Index (ARI)	My Prop	Comp Set	Index (RGI)
Current Month	-17.5	2.1	-19.1	-7.6	2.1	-9.5	-23.7	4.2	-26.8
Year To Date	-27.8	2.2	-29.3	-17.5	3.6	-20.4	-40.4	5.9	-43.8
Running 3 Month	-19.9	4.9	-23.7	-15.6	3.3	-18.3	-32.4	8.4	-37.6
Running 12 Month	-29.3	0.5	-29.7	-7.7	3.6	-10.9	-34.7	4.2	-37.3

2023 © CoStar Group. This STR Report is a publication of STR, LLC and STR Global, Ltd., CoStar Group companies, and is intended solely for use by paid subscribers. The information in the STR Report is provided on an “as is” and “as available” basis and should not be construed as investment, tax, accounting or legal advice. Reproduction or distribution of this STR Report, in whole or part, without written permission is prohibited and subject to legal action. If you have received this report and are NOT a subscriber to this STR Report, please contact us immediately. Source: 2023 STR, LLC / STR Global, Ltd. trading as “STR”.

Tab 3 - STAR Summary - My Property vs. Comp Set and Industry Segments

Baymont Inn & Suites Dublin 100 PM Watson Dr Dublin, GA 31021 Phone: (478) 275-3008

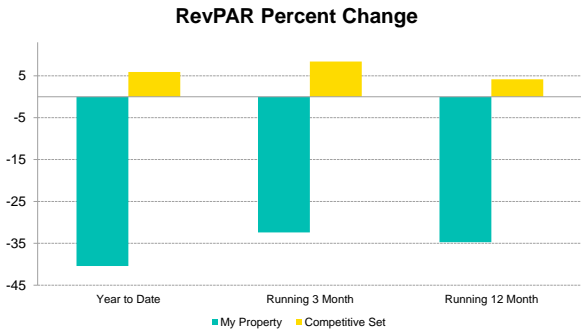
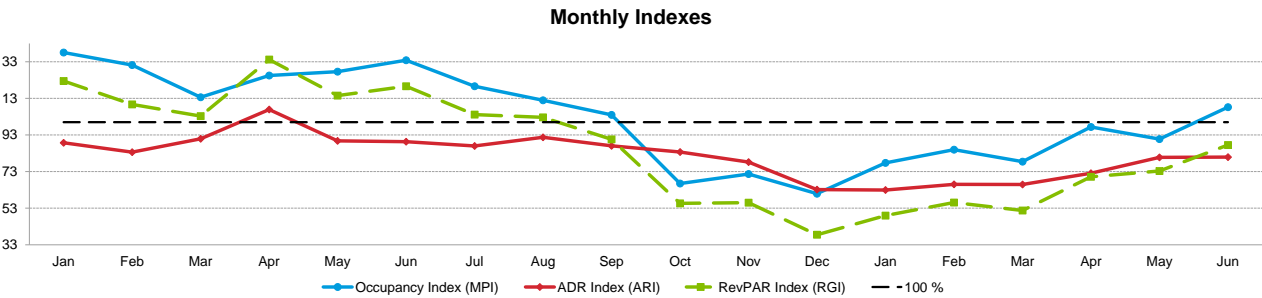
STR # 35409 ChainID: 46913 MgtCo: None Owner: None

For the Month of: June 2023 Date Created: July 17, 2023 Monthly Competitive Set Data Excludes Subject Property

	Occupancy (%)								Supply			
	Current Month	% Chg	Year to Date	% Chg	Running 3 Month	% Chg	Running 12 Month	% Chg	Month % Chg	YTD % Chg	Run 3 Mon % Chg	Run 12 Mon % Chg
	64.1	-17.5	55.1	-27.8	63.3	-19.9	52.6	-29.3	0.0	-5.0	0.0	-2.5
	61.5	-1.2	59.2	0.3	60.0	-1.8	57.4	-0.5	0.4	0.3	0.6	-0.2
	56.3	-4.5	55.1	-5.1	55.4	-6.0	54.1	-5.4	-2.8	-0.3	-0.9	-2.0
	58.1	1.3	55.7	-0.3	57.3	0.9	53.5	-1.4	-0.8	-0.2	-0.3	-0.4
	71.1	2.0	68.6	-0.8	69.4	0.3	66.1	-1.4	-0.4	0.8	0.9	1.5
	59.3	2.1	61.1	2.2	64.4	4.9	58.7	0.5	0.0	0.0	0.0	0.0
	Average Daily Rate								Demand			
	Current Month	% Chg	Year to Date	% Chg	Running 3 Month	% Chg	Running 12 Month	% Chg	Month % Chg	YTD % Chg	Run 3 Mon % Chg	Run 12 Mon % Chg
	54.06	-7.6	48.57	-17.5	52.55	-15.6	51.77	-7.7	-17.5	-31.3	-19.9	-31.0
	121.04	2.5	114.77	4.3	119.63	2.3	113.14	5.5	-0.9	0.6	-1.3	-0.8
	80.62	-0.3	79.55	1.4	80.90	-0.1	78.81	3.5	-7.2	-5.3	-6.8	-7.4
	88.07	0.5	87.23	2.7	88.31	0.6	86.19	4.6	0.6	-0.5	0.7	-1.8
	111.87	2.9	110.16	5.3	112.45	3.2	108.17	6.5	1.6	0.0	1.2	0.2
	66.83	2.1	66.52	3.6	67.56	3.3	66.06	3.6	2.1	2.2	4.9	0.5
	RevPAR								Revenue			
	Current Month	% Chg	Year to Date	% Chg	Running 3 Month	% Chg	Running 12 Month	% Chg	Month % Chg	YTD % Chg	Run 3 Mon % Chg	Run 12 Mon % Chg
	34.67	-23.7	26.74	-40.4	33.27	-32.4	27.23	-34.7	-23.7	-43.4	-32.4	-36.3
	74.45	1.3	67.89	4.6	71.80	0.4	64.96	5.0	1.6	4.9	1.0	4.7
	45.38	-4.9	43.82	-3.7	44.79	-6.1	42.66	-2.1	-7.5	-4.0	-6.9	-4.1
	51.17	1.8	48.57	2.4	50.58	1.5	46.11	3.2	1.0	2.2	1.2	2.8
	79.56	4.9	75.52	4.5	78.00	3.5	71.55	5.1	4.5	5.3	4.4	6.7
	39.60	4.2	40.66	5.9	43.50	8.4	38.78	4.2	4.2	5.9	8.4	4.2
	Census/Sample - Properties & Rooms											
	Census		Sample				Sample %					
	Properties		Rooms	Properties		Rooms	Rooms					
	575		37867	349		27061	71.5					
	72		4769	58		3998	83.8					
	244		12327	126		8143	66.1					
	70		4844	68		4798	99.1					
	6		290	6		290	100.0					

Tab 4 - Competitive Set Report

Baymont Inn & Suites Dublin 100 PM Watson Dr Dublin, GA 31021 Phone: (478) 275-3008
STR # 35409 ChainID: 46913 MgtCo: None Owner: None
For the Month of: June 2023 Date Created: July 17, 2023 Monthly Competitive Set Data Excludes Subject Property



Occupancy (%)	2022												2023					
	Jan	Feb	Mar	Apr	May	Jun	Jul	Aug	Sep	Oct	Nov	Dec	Jan	Feb	Mar	Apr	May	Jun
My Property	66.4	74.6	79.0	78.2	81.3	77.7	67.2	61.5	61.3	42.1	40.1	29.7	37.7	49.5	52.4	66.0	60.0	64.1
Competitive Set	48.1	56.8	69.6	62.3	63.7	58.0	56.2	54.9	58.9	63.3	55.9	48.8	48.5	58.3	66.8	67.7	66.1	59.3
Index (MPI)	138.1	131.2	113.6	125.5	127.6	133.9	119.6	112.0	104.0	66.5	71.7	61.0	77.8	85.0	78.4	97.4	90.7	108.2
Rank	1 of 7	1 of 7	3 of 7	2 of 7	1 of 7	1 of 7	3 of 7	3 of 7	4 of 7	6 of 7	6 of 7	7 of 7	5 of 7	6 of 7	6 of 7	4 of 7	6 of 7	4 of 7

% Chg	2022												2023					
	Jan	Feb	Mar	Apr	May	Jun	Jul	Aug	Sep	Oct	Nov	Dec	Jan	Feb	Mar	Apr	May	Jun
My Property	39.8	8.5	1.2	-4.6	0.9	-2.4	-16.6	-21.4	-20.1	-49.8	-23.5	-53.2	-43.2	-33.6	-33.7	-15.6	-26.3	-17.5
Competitive Set	5.2	16.3	21.9	-13.5	5.4	-9.5	-12.6	-0.7	-1.2	12.9	-3.3	-0.8	0.9	2.5	-4.0	8.8	3.7	2.1
Index (MPI)	32.9	-6.7	-17.0	10.3	-4.3	7.9	-4.5	-20.8	-19.1	-55.6	-20.9	-52.8	-43.7	-35.2	-31.0	-22.4	-28.9	-19.1
Rank	1 of 7	6 of 7	7 of 7	3 of 7	5 of 7	3 of 7	5 of 7	7 of 7	7 of 7	7 of 7	6 of 7	7 of 7	7 of 7	7 of 7	7 of 7	6 of 7	7 of 7	7 of 7

Year To Date			Running 3 Month			Running 12 Month		
2021	2022	2023	2021	2022	2023	2021	2022	2023
76.0	76.2	55.1	80.7	79.1	63.3	62.8	74.4	52.6
58.1	59.8	61.1	65.5	61.4	64.4	58.3	58.4	58.7
130.9	127.4	90.1	123.3	128.9	98.3	107.7	127.4	89.6
1 of 7	1 of 7	4 of 7	2 of 7	1 of 7	4 of 7	4 of 7	1 of 7	4 of 7

ADR	2022												2023					
	Jan	Feb	Mar	Apr	May	Jun	Jul	Aug	Sep	Oct	Nov	Dec	Jan	Feb	Mar	Apr	May	Jun
My Property	54.41	52.05	58.76	69.75	58.73	58.48	57.31	59.09	57.15	55.58	51.82	40.80	41.95	41.83	43.52	48.67	55.12	54.06
Competitive Set	61.32	62.26	64.61	65.25	65.43	65.45	65.85	64.42	65.62	66.39	66.27	64.61	66.67	63.36	65.96	67.51	68.23	66.83
Index (ARI)	88.7	83.6	90.9	106.9	89.8	89.3	87.0	91.7	87.1	83.7	78.2	63.1	62.9	66.0	66.0	72.1	80.8	80.9
Rank	5 of 7	5 of 7	5 of 7	3 of 7	5 of 7	5 of 7	5 of 7	5 of 7	5 of 7	5 of 7	6 of 7	7 of 7	7 of 7	7 of 7	7 of 7	7 of 7	6 of 7	5 of 7

% Chg	2022												2023					
	Jan	Feb	Mar	Apr	May	Jun	Jul	Aug	Sep	Oct	Nov	Dec	Jan	Feb	Mar	Apr	May	Jun
My Property	22.5	12.1	21.5	5.3	0.3	-3.7	-5.5	-15.5	-1.3	84.3	4.7	-19.4	-22.9	-19.6	-25.9	-30.2	-6.1	-7.6
Competitive Set	1.7	3.5	6.7	6.2	2.9	3.4	2.9	2.1	1.4	5.1	7.2	3.2	8.7	1.8	2.1	3.5	4.3	2.1
Index (ARI)	20.5	8.3	13.9	-0.9	-2.5	-6.9	-8.2	-17.3	-2.6	75.4	-2.4	-21.9	-29.1	-21.0	-27.4	-32.6	-10.0	-9.5
Rank	1 of 7	3 of 7	1 of 7	4 of 7	5 of 7	7 of 7	7 of 7	7 of 7	5 of 7	1 of 7	4 of 7	7 of 7	7 of 7	7 of 7	7 of 7	7 of 7	7 of 7	7 of 7

Year To Date			Running 3 Month			Running 12 Month		
2021	2022	2023	2021	2022	2023	2021	2022	2023
56.04	58.91	48.57	61.83	62.24	52.55	49.52	56.07	51.77
61.68	64.21	66.52	62.70	65.38	67.56	60.62	63.74	66.06
90.8	91.8	73.0	98.6	95.2	77.8	81.7	88.0	78.4
5 of 7	5 of 7	7 of 7	3 of 7	5 of 7	6 of 7	6 of 7	5 of 7	6 of 7

RevPAR	2022												2023					
	Jan	Feb	Mar	Apr	May	Jun	Jul	Aug	Sep	Oct	Nov	Dec	Jan	Feb	Mar	Apr	May	Jun
My Property	36.11	38.82	46.44	54.52	47.77	45.44	38.51	36.35	35.02	23.39	20.77	12.13	15.82	20.70	22.80	32.10	33.06	34.67
Competitive Set	29.47	35.40	44.95	40.63	41.70	37.99	36.99	35.40	38.65	42.04	37.05	31.51	32.33	36.91	44.06	45.74	45.11	39.60
Index (RGI)	122.5	109.7	103.3	134.2	114.6	119.6	104.1	102.7	90.6	55.6	56.1	38.5	48.9	56.1	51.7	70.2	73.3	87.5
Rank	3 of 7	4 of 7	4 of 7	2 of 7	3 of 7	4 of 7	4 of 7	4 of 7	5 of 7	6 of 7	6 of 7	7 of 7	7 of 7	7 of 7	7 of 7	5 of 7	5 of 7	5 of 7

Year To Date			Running 3 Month			Running 12 Month		
2021	2022	2023	2021	2022	2023	2021	2022	2023
42.61	44.89	26.74	49.90	49.23	33.27	31.08	41.72	27.23
35.83	38.40	40.66	41.06	40.12	43.50	35.33	37.23	38.78
118.9	116.9	65.8	121.5	122.7	76.5	88.0	112.1	70.2
3 of 7	3 of 7	5 of 7	3 of 7	3 of 7	5 of 7	5 of 7	4 of 7	5 of 7

% Chg	2022												2023					
	Jan	Feb	Mar	Apr	May	Jun	Jul	Aug	Sep	Oct	Nov	Dec	Jan	Feb	Mar	Apr	May	Jun
My Property	71.2	21.6	23.0	0.5	1.2	-6.0	-21.2	-33.6	-21.1	-7.5	-19.9	-62.3	-56.2	-46.7	-50.9	-41.1	-30.8	-23.7
Competitive Set	6.9	20.4	30.2	-8.1	8.5	-6.4	-10.1	1.4	0.2	18.7	3.6	2.4	9.7	4.3	-2.0	12.6	8.2	4.2
Index (RGI)	60.1	1.0	-5.5	9.4	-6.7	0.4	-12.4	-34.5	-21.2	-22.0	-22.7	-63.2	-60.0	-48.9	-49.9	-47.7	-36.0	-26.8
Rank	1 of 7	6 of 7	6 of 7	2 of 7	6 of 7	5 of 7	6 of 7	7 of 7	7 of 7	7 of 7	6 of 7	7 of 7	7 of 7	7 of 7	7 of 7	7 of 7	7 of 7	7 of 7

Year To Date			Running 3 Month			Running 12 Month		
2021	2022	2023	2021	2022	2023	2021	2022	2023
238.6	5.3	-40.4	285.6	-1.4	-32.4	52.2	34.2	-34.7
23.0	7.2	5.9	30.1	-2.3	8.4	21.0	5.4	4.2
175.4	-1.7	-43.8	196.3	0.9	-37.6	25.7	27.4	-37.3
1 of 6	4 of 7	7 of 7	1 of 6	4 of 7	7 of 7	1 of 6	1 of 7	7 of 7

Tab 5 - Response Report

Baymont Inn & Suites Dublin 100 PM Watson Dr Dublin, GA 31021 Phone: (478) 275-3008
STR # 35409 ChainID: 46913 MgtCo: None Owner: None
For the Month of: June 2023 Date Created: July 17, 2023

This Year
June 18th - Father's Day

June 2023 (This Year)

Sun	Mon	Tue	Wed	Thu	Fri	Sat
				1	2	3
4	5	6	7	8	9	10
11	12	13	14	15	16	17
18	19	20	21	22	23	24
25	26	27	28	29	30	

June 2022 (Last Year)

Sun	Mon	Tue	Wed	Thu	Fri	Sat
			1	2	3	4
5	6	7	8	9	10	11
12	13	14	15	16	17	18
19	20	21	22	23	24	25
26	27	28	29	30		

Last Year
Jun 19th - Father's Day

STR#	Name	City, State	Zip	Phone	Rooms	Open Date
35409	Baymont Inn & Suites Dublin	Dublin, GA	31021	(478) 275-3008	42	199709
19821	Days Inn Dublin	Dublin, GA	31021	(478) 275-7637	49	199001
29670	Quality Inn & Suites Dublin	Dublin, GA	31021-1712	(478) 246-1390	52	199402
31314	Motel 6 Dublin	Dublin, GA	31021-1788	(478) 272-3640	43	199510
35149	Rodeway Inn & Suites East Dublin	East Dublin, GA	31027	(478) 277-9161	44	199707
36455	Super 8 Dublin	Dublin, GA	31021-1715	(478) 246-7443	52	199805
41117	Best Western Bradford Inn	Swainsboro, GA	30401	(478) 237-2400	50	199606
					332	

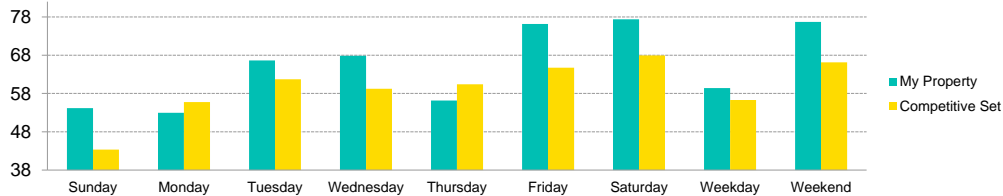
2021												2022												2023											
Jul	Aug	Sep	Oct	Nov	Dec	Jan	Feb	Mar	Apr	May	Jun	Jul	Aug	Sep	Oct	Nov	Dec	Jan	Feb	Mar	Apr	May	Jun	Jul	Aug	Sep	Oct	Nov	Dec	Jan	Feb	Mar	Apr	May	Jun
●	●	●	●	●	●	●	●	●	●	●	●	●	●	●	●	●	●	●	●	●	●	●	●	●	●	●	●	●	●	●	●	●	●	●	●
●	●	●	●	●	●	●	●	●	●	●	●	●	●	●	●	●	●	●	●	●	●	●	●	●	●	●	●	●	●	●	●	●	●	●	●
●	●	●	●	●	●	●	●	●	●	●	●	●	●	●	●	●	●	●	●	●	●	●	●	●	●	●	●	●	●	●	●	●	●	●	●
●	●	●	●	●	●	●	●	●	●	●	●	●	●	●	●	●	●	●	●	●	●	●	●	●	●	●	●	●	●	●	●	●	●	●	●
●	●	●	●	●	●	●	●	●	●	●	●	●	●	●	●	●	●	●	●	●	●	●	●	●	●	●	●	●	●	●	●	●	●	●	●
●	●	●	●	●	●	●	●	●	●	●	●	●	●	●	●	●	●	●	●	●	●	●	●	●	●	●	●	●	●	●	●	●	●	●	●
●	●	●	●	●	●	●	●	●	●	●	●	●	●	●	●	●	●	●	●	●	●	●	●	●	●	●	●	●	●	●	●	●	●	●	●

Data received:
☐ = Monthly Only
☒ = Monthly & Daily

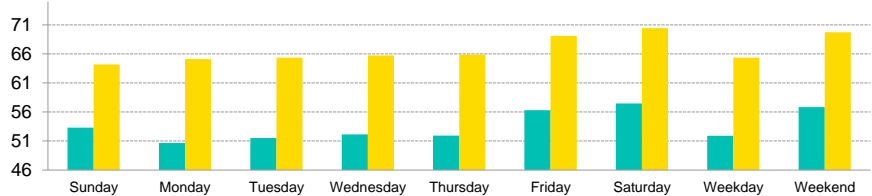
Tab 6 - Day of Week and Weekday/Weekend Report

Baymont Inn & Suites Dublin 100 PM Watson Dr Dublin, GA 31021 Phone: (478) 275-3008
STR # 35409 ChainID: 46913 MgtCo: None Owner: None
For the Month of: June 2023 Date Created: July 17, 2023 Monthly Competitive Set Data Excludes Subject Property

Current Month Occupancy



Current Month ADR



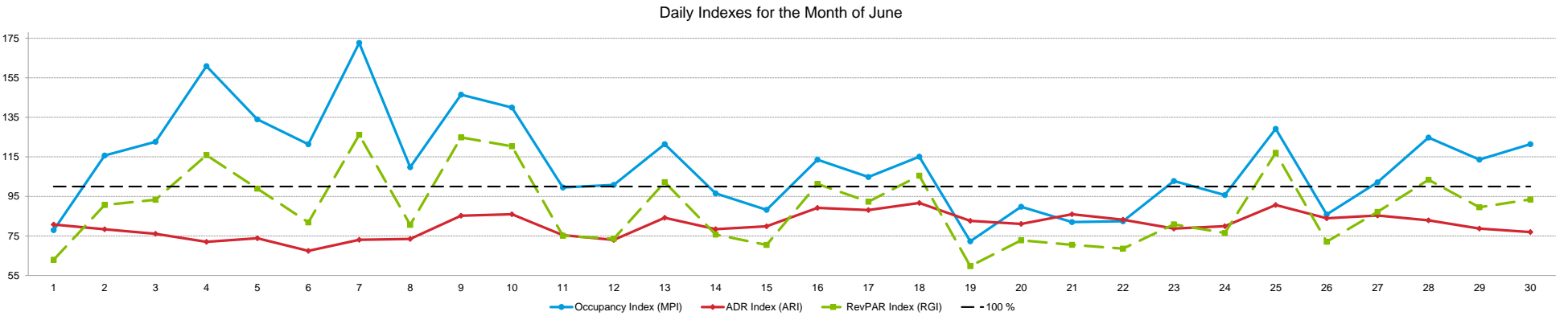
		Occupancy (%)						Average Daily Rate						RevPAR					
		My Property		Competitive Set		Index (MPI)		My Property		Competitive Set		Index (ARI)		My Property		Competitive Set		Index (RGI)	
Day of Week	Time Period	% Chg		% Chg		% Chg		% Chg		% Chg		% Chg		% Chg		% Chg		% Chg	
Sunday	Current Month	54.2	-13.3	43.4	2.7	124.9	-15.6	53.31	-4.7	64.18	4.9	83.1	-9.1	28.88	-17.4	27.83	7.7	103.8	-23.3
	Year To Date	47.6	-23.0	44.5	5.6	106.9	-27.0	45.74	-19.1	63.64	3.2	71.9	-21.6	21.78	-37.7	28.35	9.0	76.8	-42.8
	Running 3 Month	54.2	-17.3	48.5	12.3	111.7	-26.4	49.64	-16.5	64.43	3.7	77.0	-19.5	26.91	-31.0	31.28	16.4	86.0	-40.7
	Running 12 Month	43.3	-27.9	43.2	2.8	100.4	-29.9	48.57	-9.5	63.09	2.4	77.0	-11.7	21.06	-34.7	27.24	5.3	77.3	-38.1
Monday	Current Month	53.0	-31.5	55.8	-0.3	95.0	-31.3	50.67	-14.5	65.13	1.5	77.8	-15.7	26.84	-41.4	36.33	1.2	73.9	-42.1
	Year To Date	51.2	-29.9	57.7	-0.7	88.8	-29.4	46.34	-17.8	66.22	5.7	70.0	-22.2	23.75	-42.3	38.23	4.9	62.1	-45.0
	Running 3 Month	56.6	-23.5	60.2	6.2	94.0	-28.0	50.23	-14.4	66.05	4.3	76.0	-17.9	28.43	-34.5	39.77	10.7	71.5	-40.9
	Running 12 Month	48.5	-32.5	56.5	-0.5	85.8	-32.2	49.36	-9.3	65.36	4.9	75.5	-13.5	23.94	-38.7	36.93	4.3	64.8	-41.3
Tuesday	Current Month	66.7	-15.8	61.7	2.6	108.0	-17.9	51.51	-13.8	65.35	-0.1	78.8	-13.7	34.34	-27.4	40.34	2.5	85.1	-29.2
	Year To Date	56.5	-26.8	65.5	2.4	86.3	-28.5	47.09	-17.1	66.38	5.1	70.9	-21.1	26.61	-39.3	43.46	7.6	61.2	-43.6
	Running 3 Month	67.2	-14.7	68.4	8.2	98.3	-21.1	50.69	-16.0	67.23	4.3	75.4	-19.4	34.07	-28.3	45.99	12.9	74.1	-36.5
	Running 12 Month	51.9	-30.0	61.7	-1.5	84.2	-28.9	49.88	-9.4	65.81	5.4	75.8	-14.0	25.89	-36.6	40.57	3.8	63.8	-38.9
Wednesday	Current Month	67.9	-15.2	59.2	1.1	114.6	-16.1	52.14	-8.0	65.74	0.5	79.3	-8.4	35.38	-21.9	38.93	1.6	90.9	-23.2
	Year To Date	54.4	-30.8	64.4	0.0	84.5	-30.8	47.52	-16.4	65.64	3.9	72.4	-19.6	25.83	-42.2	42.24	3.9	61.2	-44.4
	Running 3 Month	62.6	-24.7	66.7	4.6	93.9	-28.0	51.03	-14.2	66.59	3.7	76.6	-17.3	31.96	-35.4	44.41	8.5	72.0	-40.4
	Running 12 Month	52.5	-28.7	61.8	-1.7	85.0	-27.5	50.11	-9.3	65.35	4.2	76.7	-13.0	26.33	-35.3	40.39	2.4	65.2	-36.9
Thursday	Current Month	56.2	-24.8	60.4	12.7	93.0	-33.3	51.92	-5.3	65.90	1.6	78.8	-6.8	29.18	-28.8	39.81	14.5	73.3	-37.9
	Year To Date	50.2	-32.7	61.0	6.2	82.3	-36.7	48.37	-14.6	65.00	2.4	74.4	-16.6	24.28	-42.6	39.65	8.7	61.2	-47.2
	Running 3 Month	57.9	-26.3	63.5	10.2	91.1	-33.2	53.04	-9.2	65.93	2.6	80.4	-11.5	30.70	-33.1	41.89	13.1	73.3	-40.9
	Running 12 Month	50.0	-31.3	58.0	1.2	86.2	-32.1	50.95	-7.8	64.70	2.5	78.7	-10.0	25.46	-36.7	37.50	3.7	67.9	-38.9
Friday	Current Month	76.2	-7.2	64.8	-1.0	117.7	-6.3	56.31	-4.3	69.12	2.2	81.5	-6.4	42.90	-11.2	44.76	1.2	95.8	-12.3
	Year To Date	62.2	-26.4	66.1	1.7	94.1	-27.6	52.66	-16.2	68.27	1.9	77.1	-17.8	32.76	-38.3	45.16	3.7	72.6	-40.5
	Running 3 Month	72.0	-16.9	70.3	0.8	102.4	-17.6	55.73	-17.1	69.81	2.4	79.8	-19.0	40.11	-31.1	49.07	3.3	81.7	-33.3
	Running 12 Month	60.2	-28.5	63.4	0.7	95.1	-29.0	55.92	-3.4	67.91	2.7	82.3	-6.0	33.69	-30.9	43.03	3.5	78.3	-33.2
Saturday	Current Month	77.4	-12.2	67.9	-4.8	113.9	-7.7	57.48	-10.4	70.44	4.1	81.6	-13.9	44.48	-21.3	47.85	-0.9	93.0	-20.5
	Year To Date	61.2	-28.1	68.9	1.7	88.8	-29.3	52.77	-17.7	69.42	3.4	76.0	-20.4	32.28	-40.8	47.82	5.2	67.5	-43.7
	Running 3 Month	72.0	-18.1	73.2	-3.0	98.4	-15.6	56.59	-18.6	71.19	3.5	79.5	-21.3	40.73	-33.3	52.08	0.4	78.2	-33.6
	Running 12 Month	60.3	-29.4	66.4	2.7	90.8	-31.3	56.60	-3.7	68.85	3.2	82.2	-6.7	34.12	-32.0	45.72	6.0	74.6	-35.9
Weekday/Weekend																			
Weekday (Sun-Thu)	Current Month	59.4	-20.8	56.3	3.7	105.5	-23.6	51.91	-9.3	65.35	1.4	79.4	-10.5	30.84	-28.1	36.80	5.2	83.8	-31.7
	Year To Date	52.0	-28.8	58.6	2.4	88.7	-30.5	47.03	-17.0	65.48	4.1	71.8	-20.2	24.45	-40.9	38.39	6.6	63.7	-44.6
	Running 3 Month	59.7	-21.4	61.5	8.0	97.1	-27.3	50.94	-14.1	66.15	3.7	77.0	-17.1	30.41	-32.5	40.67	12.0	74.8	-39.7
	Running 12 Month	49.3	-30.1	56.2	-0.1	87.7	-30.0	49.82	-9.0	64.97	4.0	76.7	-12.5	24.55	-36.4	36.52	3.8	67.2	-38.8
Weekend (Fri-Sat)	Current Month	76.7	-9.9	66.2	-3.3	115.9	-6.8	56.83	-7.7	69.72	3.1	81.5	-10.5	43.60	-16.8	46.13	-0.3	94.5	-16.6
	Year To Date	61.7	-27.2	67.5	1.6	91.4	-28.4	52.71	-17.0	68.85	2.7	76.6	-19.1	32.52	-39.6	46.46	4.4	70.0	-42.1
	Running 3 Month	72.0	-17.5	71.7	-1.1	100.4	-16.6	56.16	-17.9	70.52	2.9	79.6	-20.2	40.42	-32.2	50.58	1.8	79.9	-33.4
	Running 12 Month	60.3	-29.0	64.9	1.7	92.9	-30.2	56.25	-3.5	68.39	3.0	82.3	-6.3	33.90	-31.5	44.37	4.7	76.4	-34.6
Total	Current Month	64.1	-17.5	59.3	2.1	108.2	-19.1	54.06	-7.6	66.83	2.1	80.9	-9.5	34.67	-23.7	39.60	4.2	87.5	-26.8
	Year To Date	55.1	-27.8	61.1	2.2	90.1	-29.3	48.57	-17.5	66.52	3.6	73.0	-20.4	26.74	-40.4	40.66	5.9	65.8	-43.8
	Running 3 Month	63.3	-19.9	64.4	4.9	98.3	-23.7	52.55	-15.6	67.56	3.3	77.8	-18.3	33.27	-32.4	43.50	8.4	76.5	-37.6
	Running 12 Month	52.6	-29.3	58.7	0.5	89.6	-29.7	51.77	-7.7	66.06	3.6	78.4	-10.9	27.23	-34.7	38.78	4.2	70.2	-37.1

Tab 7 - Daily Data for the Month

Baymont Inn & Suites Dublin 100 PM Watson Dr Dublin, GA 31021 Phone: (478) 275-3008

STR # 35409 ChainID: 46913 MgtCo: None Owner: None

For the Month of: June 2023 Date Created: July 17, 2023 Daily Competitive Set Data Excludes Subject Property



Occupancy (%)	Th	Fr	Sa	Su	Mo	Tu	We	Th	Fr	Sa	Su	Mo	Tu	We	Th	Fr	Sa	Su	Mo	Tu	We	Th	Fr	Sa	Su	Mo	Tu	We	Th	Fr
	June																													
	1	2	3	4	5	6	7	8	9	10	11	12	13	14	15	16	17	18	19	20	21	22	23	24	25	26	27	28	29	30
My Property	50.0	73.8	90.5	57.1	61.9	69.0	85.7	57.1	66.7	71.4	38.1	47.6	76.2	61.9	54.8	88.1	81.0	59.5	47.6	61.9	57.1	57.1	76.2	66.7	61.9	54.8	59.5	66.7	61.9	76.2
Competitive Set	64.1	63.8	73.8	35.5	46.2	56.9	49.7	52.1	45.5	51.0	38.3	47.2	62.8	64.1	62.1	77.6	77.2	51.7	65.9	69.0	69.7	69.3	74.1	69.7	47.9	63.8	58.3	53.4	54.5	62.8
Index (MPI)	78.0	115.7	122.6	160.9	134.0	121.4	172.6	109.7	146.5	140.0	99.5	100.8	121.4	96.5	88.2	113.5	104.8	115.1	72.3	89.8	82.0	82.4	102.8	95.7	129.2	85.8	102.1	124.7	113.6	121.4

% Chg																														
My Property	-38.2	-13.9	0.0	-22.6	-29.7	-21.6	-2.7	-17.2	-17.6	-18.9	-30.4	-9.1	18.5	-13.3	-14.8	5.7	-12.8	13.6	-39.4	-16.1	-31.4	-20.0	-3.0	-17.6	-10.3	-39.5	-34.2	-28.2	-29.7	-5.9
Competitive Set	31.9	-8.4	-7.0	-14.9	-25.1	-24.7	-32.4	-15.6	-32.3	-28.5	-22.9	-22.2	11.7	22.4	19.2	8.7	5.7	27.1	19.4	18.3	17.4	31.4	38.7	12.8	29.9	38.1	15.0	-5.5	3.3	-3.7
Index (MPI)	-53.2	-6.0	7.5	-9.1	-6.1	4.0	43.9	-1.9	21.7	13.4	-9.8	16.8	6.1	-29.2	-28.5	-2.7	-17.5	-10.6	-49.2	-29.1	-41.6	-39.1	-30.1	-27.0	-31.0	-56.2	-42.8	-24.0	-32.0	-2.3

ADR	June																													
	1	2	3	4	5	6	7	8	9	10	11	12	13	14	15	16	17	18	19	20	21	22	23	24	25	26	27	28	29	30
	51.95	55.29	57.07	45.94	47.66	46.17	49.98	50.31	59.01	56.68	47.03	48.86	53.43	51.74	52.95	61.58	61.09	59.36	53.28	52.58	55.17	54.57	53.02	56.03	59.22	54.49	55.44	53.89	51.39	53.71
Competitive Set	64.32	70.55	74.99	63.79	64.54	68.45	68.39	68.48	69.22	65.95	62.35	66.93	63.46	65.98	66.28	69.03	69.36	64.74	64.47	64.83	64.19	65.58	67.35	70.12	65.33	64.90	64.98	65.00	65.25	69.78
Index (ARI)	80.8	78.4	76.1	72.0	73.8	67.5	73.1	73.5	85.3	86.0	75.4	73.0	84.2	78.4	79.9	89.2	88.1	91.7	82.6	81.1	86.0	83.2	78.7	79.9	90.6	84.0	85.3	82.9	78.8	77.0

% Chg																														
My Property	13.2	-3.5	-11.7	-18.3	-21.5	-18.9	-11.9	-7.6	-4.7	-17.2	-2.1	-12.8	-10.2	-8.1	-4.9	9.3	-2.3	2.9	-6.2	-10.1	1.3	-7.3	-9.3	-5.1	0.0	-10.0	-11.1	-4.9	-11.5	-6.7
Competitive Set	-0.6	4.3	5.9	1.0	-0.9	3.1	3.3	6.7	5.6	0.7	3.8	6.2	-2.3	-0.3	3.6	-0.1	3.1	5.0	-4.6	-2.6	-2.6	-1.2	-1.2	5.4	9.2	7.7	2.9	1.7	0.1	3.0
Index (ARI)	13.9	-7.4	-16.6	-19.1	-20.8	-21.4	-14.7	-13.4	-9.8	-17.7	-5.6	-17.9	-8.1	-7.8	-8.2	9.4	-5.2	-2.1	-1.6	-7.7	3.9	-6.2	-8.2	-9.9	-8.5	-16.4	-13.6	-6.5	-11.6	-9.4

RevPAR	June																													
	1	2	3	4	5	6	7	8	9	10	11	12	13	14	15	16	17	18	19	20	21	22	23	24	25	26	27	28	29	30
	25.97	40.81	51.64	26.25	29.50	31.88	42.84	28.75	39.34	40.49	17.92	23.27	40.71	32.03	29.00	54.25	49.45	35.33	25.37	32.55	31.53	31.18	40.39	37.36	36.66	29.84	33.00	35.93	31.81	40.93
Competitive Set	41.25	45.00	55.34	22.66	29.82	38.94	33.96	35.66	31.51	33.66	23.86	31.62	39.83	42.32	41.14	53.56	53.57	33.49	42.46	44.71	44.71	45.45	49.93	48.84	31.31	41.40	37.87	34.74	35.55	43.80
Index (RGI)	63.0	90.7	93.3	115.9	98.9	81.9	126.2	80.6	124.9	120.3	75.1	73.6	102.2	75.7	70.5	101.3	92.3	105.5	59.7	72.8	70.5	68.6	80.9	76.5	117.1	72.1	87.2	103.4	89.5	93.4

% Chg																														
My Property	-30.1	-16.9	-11.7	-36.8	-44.8	-36.5	-14.3	-23.5	-21.5	-32.9	-31.9	-20.7	6.4	-20.4	-19.0	15.5	-14.8	16.9	-43.1	-24.6	-30.6	-25.9	-12.1	-21.8	-10.4	-45.5	-41.5	-31.7	-37.8	-12.2
Competitive Set	31.2	-4.5	-1.4	-14.1	-25.8	-22.3	-30.2	-10.0	-28.5	-28.0	-20.0	-17.3	9.1	22.0	23.5	8.6	8.9	33.5	13.8	15.3	14.4	29.8	37.0	19.0	41.9	48.6	18.3	-3.9	3.4	-0.8
Index (RGI)	-46.7	-13.0	-10.4	-26.4	-25.6	-18.2	22.8	-15.0	9.7	-6.7	-14.8	-4.1	-2.5	-34.7	-34.4	6.4	-21.8	-12.4	-50.0	-34.6	-39.3	-42.9	-35.8	-34.3	-36.8	-63.3	-50.6	-29.0	-39.9	-11.4



How can we assist you?

Glossary:

For all STR definitions, please click here or visit www.str.com/data-insights/resources/glossary

Frequently Asked Questions (FAQ):

For all STR FAQs, please click here or visit www.str.com/data-insights/resources/FAQ

For additional support, please [contact](#) your regional office.

For the latest in industry news, visit HotelNewsNow.com.

To learn more about the Hotel Data Conference, visit HotelDataConference.com.